

An integral solution for Time Registration and Planning

TIME REGISTRATION

Why choose TimeTell?

TimeTell is a European software company specialized in Time Registration and Planning. We have more than 550 clients and over 120.000 users worldwide. With 25 years of experience we prove to be a reliable partner for our clients. TimeTell offers an innovative, stable and solid solution. The software is flexible and can be configured to the specific wishes of our clients. Last but not least the implementation is done by our experienced and committed consultants.

TimeTell headquarter is located in the Netherlands (The Hague). There are subsidiaries in Germany (Düsseldorf) and Belgium (Antwerp). TimeTell is used all over Europe and in some countries outside Europe.

Modular

TimeTell consists of a range of modules with 2 main modules: Time Registration and Planning. The main modules can be installed as a stand-alone solution or in combination with each other as an integrated solution.

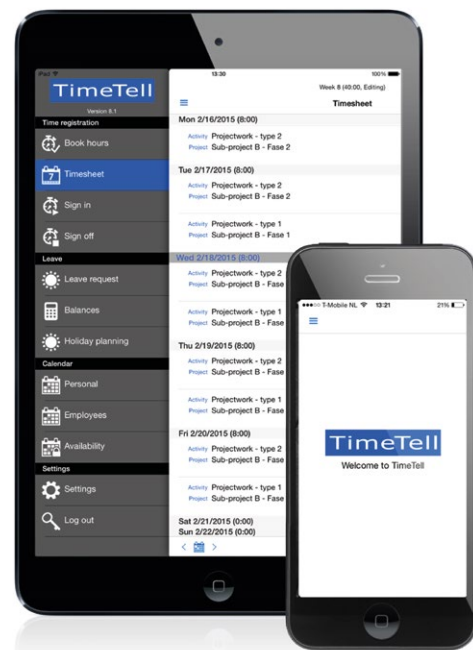


TimeTell productmodules

The TimeTell software can be enriched with extra functionality by adding modules. The module-overview below shows all available modules. TimeTell is available in 3 languages: English, German and Dutch.

Online, On-premises & App

TimeTell is platform independent. That means that TimeTell works both online and on-premises (local server). The TimeTell App is available for iOS and Android. The App offers comprehensive functionality for the end-user including timesheet, leave and calendar.



TimeTell App

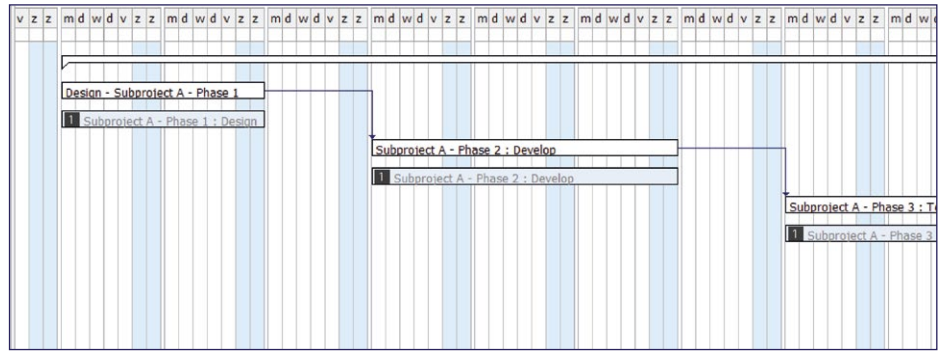
Time Registration

The Time Registration module makes it easy to book time on activities, projects and/or customers for accountability towards the employer, project organization and/or funding providers. Time registrations can also be used as a source for invoicing customers. Chronological time bookings (from/to times) are also possible in TimeTell.

Planning

Personnel Planning

Based on competences employees can be planned on tasks per week, day or timeframe. It is also possible to manually allocate employees on shifts. Scheduled shifts are presented in the [TimeTell Calendar](#), which can be synchronized with MS Outlook.



Gantt-chart

Project & Resource Allocation Planning

- Planning projects, tasks and activities
- Insight in available capacity per employee/ competence
- Graphic visuals in Gantt-charts (as shown in visual)

[Leave & Absence](#) - Leave registration in TimeTell is straightforward and powerful. Employees have direct insight in their leave balances and their holiday schedule and they can easily send in a leave request. The manager can be notified per e-mail, when a request has been made. The manager is presented with a holiday schedule for the department and available capacity and can approve or reject requests from there. After approval all leave balances and timesheets are updated. The complete leave-workflow can be managed in TimeTell. Sick leave is processed in TimeTell in a similar manner.

[Reports](#) - The Reporting Module contains hundreds of standard reports. Both static and dynamic reports can be generated (pivot table, graphs, filters, groups, etc). It is also possible to compose your own reports (lay-out and query). Underlying information can be accessed by performing a drill down. Exports are possible to MS Excel, PDF and several other file formats.

[Interface](#) - The Interface Module can be used to import and export data to and from external applications such as financial-, ERP-, and personnel systems. Interfaces have been realized with SAP, Oracle, Peoplesoft, Microsoft Navision, ADP, RAET, Exact, AFAS and TOPdesk. Custom interfaces can be configured as well.

[Budget](#) - Organizational units/staffing budgets can be monitored in TimeTell with the Budget Module.

Budgets can be shown in hours and money (hours * rates). There are overviews available for budget versus realization, providing insight in the depletion of the budget.

[Overtime](#) - Collective labour agreements and overtime agreements can be configured in TimeTell. Overtime and other compensations are automatically calculated.

[Mail](#) - TimeTell can generate e-mail automatically. For example reminders to send in timesheets. Also automatically generated reports can be send by TimeTell.

[Time & Attendance](#) - TimeTell can work together with Datafox terminals for time registration. By presenting a keytag to the Datafox terminal employees register their time of arrival or departure. The Datafox terminal is connected to the TimeTell software that automatically books the registration in the timesheet.



Datafox EVO 4.3

TIME REGISTRATION

